

WIMBLEDON COMMUNITY FORUM
27 SEPTEMBER 2018

(7.15 pm - 9.15 pm)

PRESENT Councillors Councillor James Holmes (in the Chair),

1 WELCOME AND INTRODUCTIONS (Agenda Item 1)

The meeting was held at the Wimbledon Arts Space, and chaired by Councillor James Holmes. More than 70 residents attended, as well as seven other Merton Councillors. The Chair welcomed everyone to the meeting, introducing the councillors present at the meeting.

2 OPEN FORUM (Agenda Item 2)

5G

Ingrid Dickenson raised the impact of the roll out of 5G Wi-Fi on resident's health as the plans would greatly increase areas impacted by radiation. A petition signed by 220 scientists from 35 countries has called for a moratorium on the installation of 5G and 300 city Mayors in the USA are threatening to sue the Federal Communications Commission (FCC) due to the lack of research undertaken. More information is available at: <http://www.iemfa.org/emf-scientist-appeal-to-the-united-nations/>
<http://www.bemri.org/news.html>
<https://takebackyourpower.net/gestapo-in-usa-5g-fcc-intimidates-press-kills-free-speech/>

Harris Academy Wimbledon

Peter Walker raised concern about the impact of air pollution on the construction of the new Harris Academy school for 1100 pupils on High Path and the neighbouring Merton Abbey Primary School. The submission from Harris to the Planning Applications Committee suggested there was nothing to worry about but this was in contradiction to the Air Quality Audit from the Mayor of London. The audit can be found at: <https://www.london.gov.uk/what-we-do/environment/pollution-and-air-quality/mayors-school-air-quality-audit-programme>. Mr Walker said building the new school on that site would make air quality worse and called on residents to press the Mayor of London, the Leader of the Council and the Planning Applications Committee to not go ahead.

Details of the planning application can be found at <http://planning.merton.gov.uk/Northgate/PlanningExplorerAA/GeneralSearch.aspx>, reference number 18/P1921, and comments can be received until 9 October.

Other residents commented that land from Merton Abbey should not be lost, that the construction phase would have a huge impact on the school and that the Planning Applications Committee should be independent and fair, not party political. There was also disappointment that bids for Merton Hall were viewed in private not public and that works had taken place before the bids were received.

Cllr Stringer said she understood concerns about the impact of construction but that the new school would not have any additional impact on air quality. The new schools would use playing fields on Nursery Road so there would not be any impact on Merton Abbey Rec.

Cllr Gretton called on the Council to reconsider the plans.

Morley Park

A resident expressed concerns, on behalf of the Friends of Morley Park, about the delay in the transfer of the land from Barkley Homes to Merton Council and the resulting loss of amenity to residents. The resident also wanted to know if Barkley Homes would be charged for

Kris Witherington said that this issue had been raised at the Raynes Park Community Forum last week and Neil Milligan, Head of Development Control, said that the delay had been due to the need to remove Japanese knotweed from the site before handover. The council is insisting that Barkley Homes take out a significant liability insurance against the knotweed returning in the next ten years and once that was resolved the land could be handed over to Merton Council.

The meeting agreed that the following motion should be submitted to Council by Councillor Holmes:

“That the Cabinet Member be asked to report back promptly on how they propose to bring negotiations with Barkley Homes over Morley Park to a rapid conclusion and open the park consistent with the planning consent.”

3 MERTON HEALTH AND CARE PLAN (Agenda Item 3)

Fiona Gaylor, spoke about the Merton Clinical Commissioning Group’s plans and the conversations they have been having with residents. As presentation is available in Appendix 1.

Fiona said the role of the CCG is to improve health and well-being, reduce health inequalities, and ensure equal access to quality services. Every year the CCG produces new plans and speaks to residents about services. Since August they have been speaking with community groups across Merton. They are facing a number of challenges including:

- We know patients have to wait longer than they would expect to, to access some services
- The NHS is facing unprecedented financial challenges
- The quality of some of our services are variable
- Not all of our NHS buildings are in the best condition and need repairs
- Having good access psychological therapies remains a challenge
- There is expected growth in our population which will put pressure on services now and in the future
- There is an increasing demand for new treatments and therapies

The CCG has three priorities areas:

Start Well - Integrated support for children and families; Emotional wellbeing and mental health

Live Well - Wellbeing and long term conditions; Mental health and wellbeing

Age Well - Complex health and care needs

Fiona asked residents for feedback on local services. Residents said getting GP appointments could be very difficult, particularly at the Nelson. Other residents raised issues about continuing healthcare, drug and alcohol services, provision for rough sleepers, coordinated services for older people the Nelson, the accessibility of the Live Well service, and provision of a green gym. Fiona agreed to share the final report from the CCG.

4 LEADER OF THE COUNCIL (Agenda Item 4)

Councillor Stephen Alambritis provided an update and responded to questions. Finances across local government remain stretched and Merton was no exception. The latest Medium Term Financial Strategy shows that there is a budget gap of £19m from 2019/20 to 2022/23. This would be met through a mix of savings and income generation. Much of the cost pressures relate to Adult Social Care where the Council has a statutory duty to provide for some of the most vulnerable people in Merton. The Council has invested an additional £9m in Adult Social Care to help meet these challenges.

Children's services, where the Council is a corporate parent to 135 children and young people, are also a high priority. The recent Ofsted inspection found that the Council was good with outstanding features and one of the top ten authorities in England.

Working in partnership with other boroughs has also helped reduce costs. Merton leads a legal services partnership on behalf of four other boroughs; shares regulatory services like licensing across three boroughs and has even let out three floors in the Civic Centre to colleagues in the NHS. Renting out parks has also brought in

additional revenue but can cause residents concern which the council is sensitive too.

The new dementia friendly library in Colliers Wood was recently short-listed for the 2018 Library of the Year award.

The Council has created an additional 4400 extra primary school places since 2010 by extending 23 schools. There are now 15 outstanding schools in Merton, including the most recently Harris Morden, a school which had previously rated as inadequate. The Council's School Improvement Team continues to work across the borough to support schools. In last year's GCSE results Merton had the highest scores for the Progress 8 school which measures progress from Key Stage 2 to Key Stage 4.

There a number of important regeneration projects underway. Clarion Housing is investing £1billion in improving three estates, that will result in better quality homes and no loss of social housing. The More Morden regeneration is back on track, with a new local plan being developed in 2018, and a development partner being appointed to begin works on improving the public domain in 2021. The new £13m Morden Leisure Centre is due to open later in the autumn with a six-lane pool, diving pool, café and gym. The old leisure centre will then be demolished and returned to park land. On Plough Lane work is progressing on the new football stadium for AFC Wimbledon. The club will hopefully move in for the 2020/21 season. There will also be 600 new homes, at least 30% of which will be affordable. £7million has been invested in Mitcham town centre, the tower in Colliers Wood has finally been improved and a new improved healthcare facility at the Wilson should be open by 2022. Whilst Crossrail 2 is welcomed, it is not at the cost of the town centre.

The use of Landfill needs to stop and the new rubbish and recycling service beginning on 1 October should help increase the amount of household rubbish is recycled to over 45%. The new system should also save £1.5m in the first year, £2million a year thereafter and reduce litter on the street. The street cleaning performance of Veolia has not been good enough, and we are sorry for that. In 2017/18 we deducted 10% of the contract value and will do again this year if necessary.

Cllr Alambritis thanked all those who volunteered in Merton. Volunteers are an essential part of life in Merton and he was pleased that the Cabinet had just agreed to continue to support the voluntary sector through a new Strategic Partner Funding Programme.

On the new Harris Academy Cllr Alambritis said the Council had a duty to provide sufficient primary school places and the expansion in that sector meant a new secondary school was needed. The proposal from Harris had been agreed by the Department for Education and the Education and Skills Funding Agency. The new

school was already oversubscribed and proving popular with parents. The Planning Applications Committee is a quasi-judicial committee that takes information from experts and objections and support submitted by residents. If someone feels something untoward has taken place they can report to the Local Government Ombudsman.

A resident asked about the option of Compulsory Purchase Order of the building being used for temporary accommodation on the Willow Lane Industrial Estate. Cllr Alambritis said CPOs are looked at on an individual basis and he was happy to look into the particular case.

A resident said she felt that planning officers were overworked and under pressure with reduced enforcement activity but a quality service is a priority. Cllr Alambritis said the service is under pressure, many services are as the council has to priorities and make difficult decisions to balance the budget.

A resident asked about the proposal for a concert hall on the P3 site. Cllr Alambritis said that the lease for the site, the car park behind Morrison's, would return to the council in 2019 and that he had met with the Wimbledon Choral Society to discuss their plans. They key would be if the plans are both deliverable and sustainable.

5 WIMBLEDON MASTERPLAN (Agenda Item 5)

Paul McGarry gave a presentation on the new draft of the Wimbledon Master Plan that would be going out to public consultation from 1 October to 7 December. The presentation is available in appendix 2 and the full Master Plan document can be found at <https://www.merton.gov.uk/planning-and-buildings/regeneration-urban-design/future-wimbledon>

Paul said that he and the team would be happy to attend local meetings to discuss the document and can be contacted via email to future.merton@merton.gov.uk. The plan looks at people and spaces as well as buildings and the aim is to provide certainty to developers from both the Council and the local community.

Wimbledon has a long history of recycling itself, usually in response to changes to the transport network and Crossrail 2 presents another opportunity to do so again. Currently the town centre is in a single line east to west, so the plan looks at expanding north to south over the railway lines, to create a cross with the station at the heart of the town. This will also create new open space. The plan proposes to set new height levels of 8-10 stories or 14-16 for buildings over the railway. The plan also proposes to maintain the 'DNA' of Wimbledon in the design of new buildings, for example in the use of white Portland stone.

There will be pop-up events to test open spaces on St Marks and outside New Wimbledon Theatre. The team will also use social media, temporary street stencils and is talking to schools about involving young people. Paul agreed to return in December for a fuller discussion.

6 NEXT MEETING DATE (Agenda Item 6)

Councillor Holmes thanked everyone for attending and closed the meeting.

Dates of future meetings:

Tuesday 4 December 2018 at Wimbledon Arts Space

Thursday 28 March 2019 at Wimbledon Arts Space

Merton Health and Care Plan & Commissioning Intentions 2019/20



Who are we ?

- Merton CCG are responsible for buying, planning and monitoring local healthcare services for everyone in the borough
- We work with 24 GP practices and with local partners including:
 1. Pharmacies
 2. Hospitals
 3. Dentists
 4. Mental health providers
 5. The Council
 6. Community groups, including Healthwatch

We aim to:

- Improve health and wellbeing
- Reduce health inequalities
- Ensure everyone has equal access to healthcare services



Why we are here today?

- We work to continuously improve the services we plan and buy for people living in Merton
- We can only do this if we speak to patients and local community groups to gather their views on the services they use and what they feel needs improving
- To do this we are holding series of meetings with **community and patient groups** between August and November 2018
- We are using learning from similar work we did last year with patients to improve conversations with local people and community groups this year



Our challenges

- We know patients have to wait longer than they would expect to, to access some services
- The NHS is facing unprecedented financial challenges
- The quality of some of our services are variable
- Not all of our NHS buildings are in the best condition and need repairs
- Having good access psychological therapies remains a challenge
- There is expected growth in our population which will put pressure on services now and in the future
- There is an increasing demand for new treatments and therapies



Early thinking about our priorities

Start Well

- Integrated support for children and families
- Emotional wellbeing and mental health

Live Well

- Wellbeing and long term conditions
- Mental health and wellbeing

Age Well

- Complex health and care needs



What local people and community organisations have told us so far



Continuity of care remains a priority for people in Merton, with a particular reference to ongoing support for managing long term conditions such as diabetes.

Accessibility of services is very important to people in Merton, particularly for services they have to use regularly



There is significant support for better **integration of health and social care services**. Services do not always feel **person centred** and did not always take into account the background and preferences of the individual.

People in Merton place a lot of value in **therapy support, and other specialist input**. However people did report concerns about the capacity of these teams and their ability to recruit and retain good staff



People are very positive about the move towards services **encouraging wellbeing and independence**. The social prescribing pilot in East Merton has held up as being a particularly good example of this.

Mental Health is a clear priority for people in Merton. Access to mental health services was raised as a concern, particularly for services for common mental health issues.



Tell us what you matters to you?

- What NHS services have you used and liked in Merton?
- What services have you used that you think could be improved?



What we will do with your feedback and comments

- We will use the feedback from this conversation to help shape our plans and deliver improvements in local services
- We will develop a report to show how we have taken on your comments and what services have changed as result of patient and public feedback, and share this with you



Any questions ?



This page is intentionally left blank

MERTON COUNCIL

Future Merton

FWW:

Future
Wimbledon
Masterplan

Wimbledon Community Forum

27th September 2018

merton.gov.uk/futurewimbledon

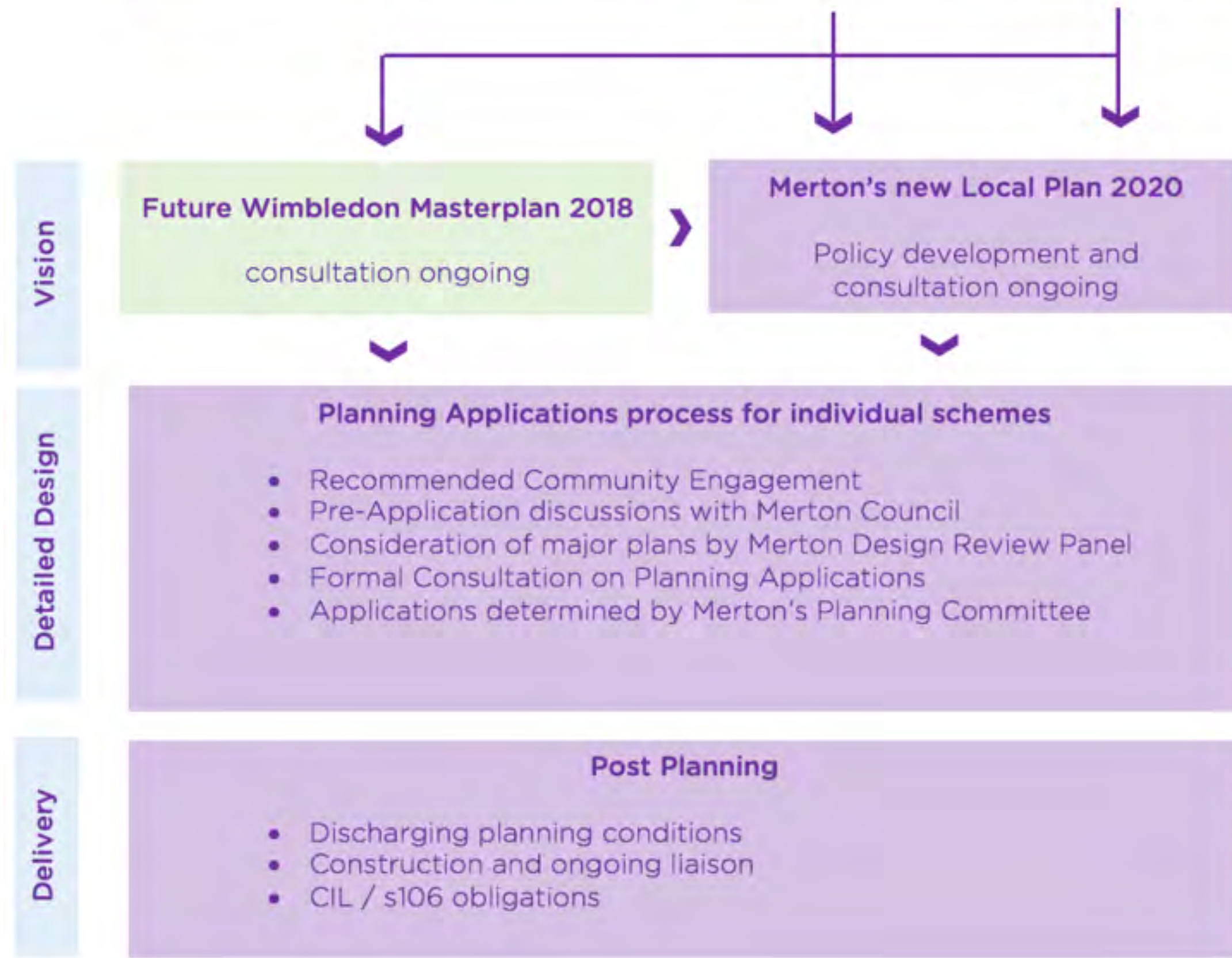


Future Wimbledon: Community Forum Briefing

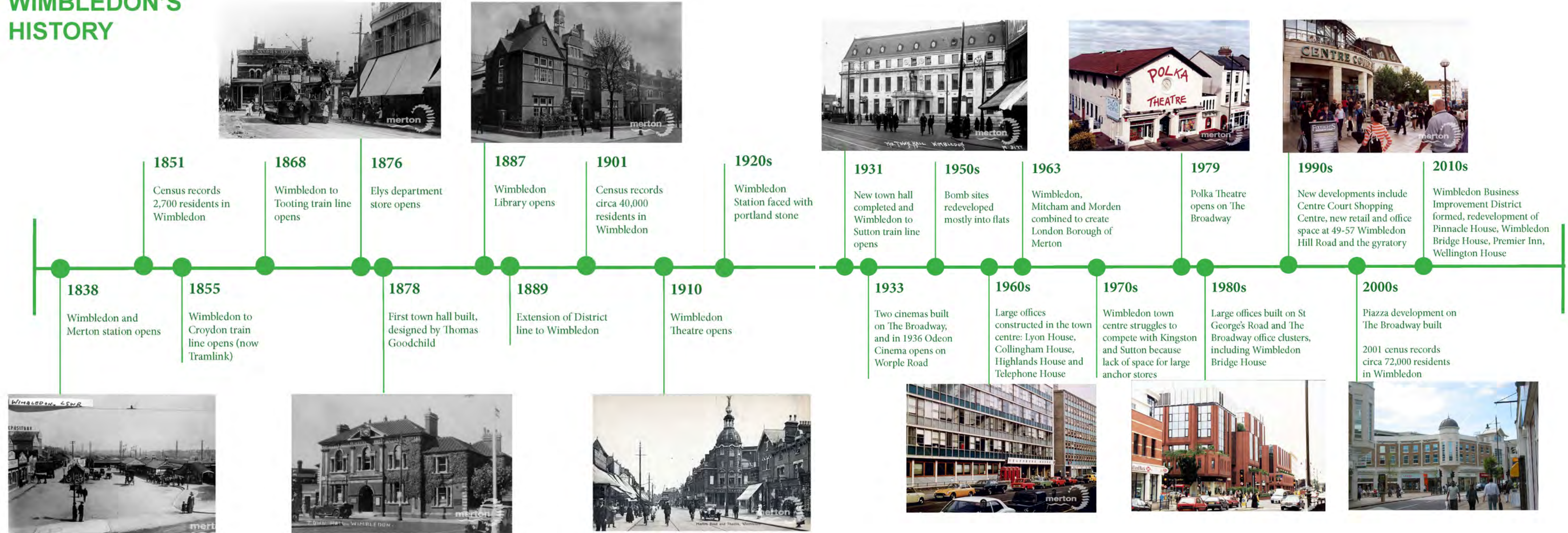


- Masterplan status
- Masterplan process & engagement so far
- Strategy - growing a successful town centre
- The Masterplan
- Engagement planned

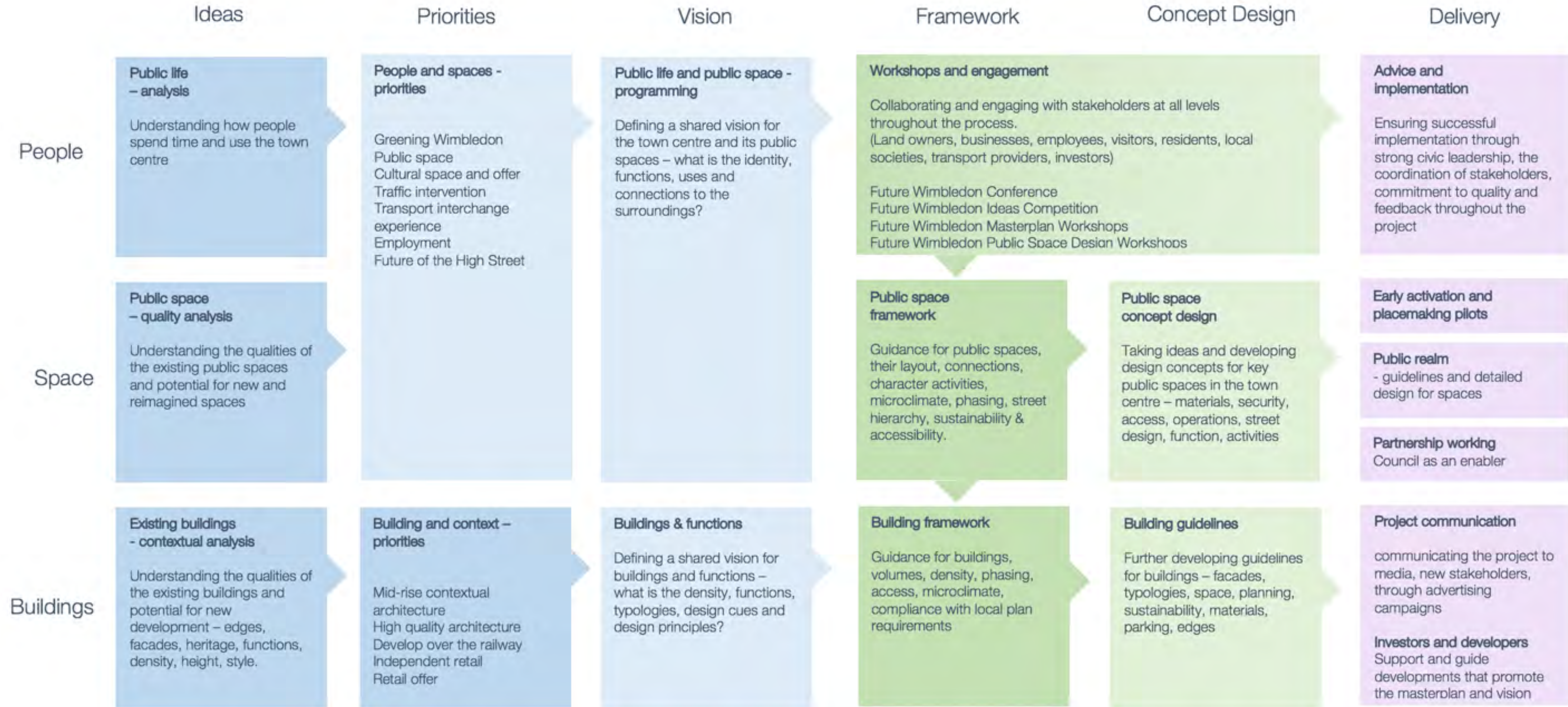
Masterplan Status



WIMBLEDON'S HISTORY



Masterplan Process



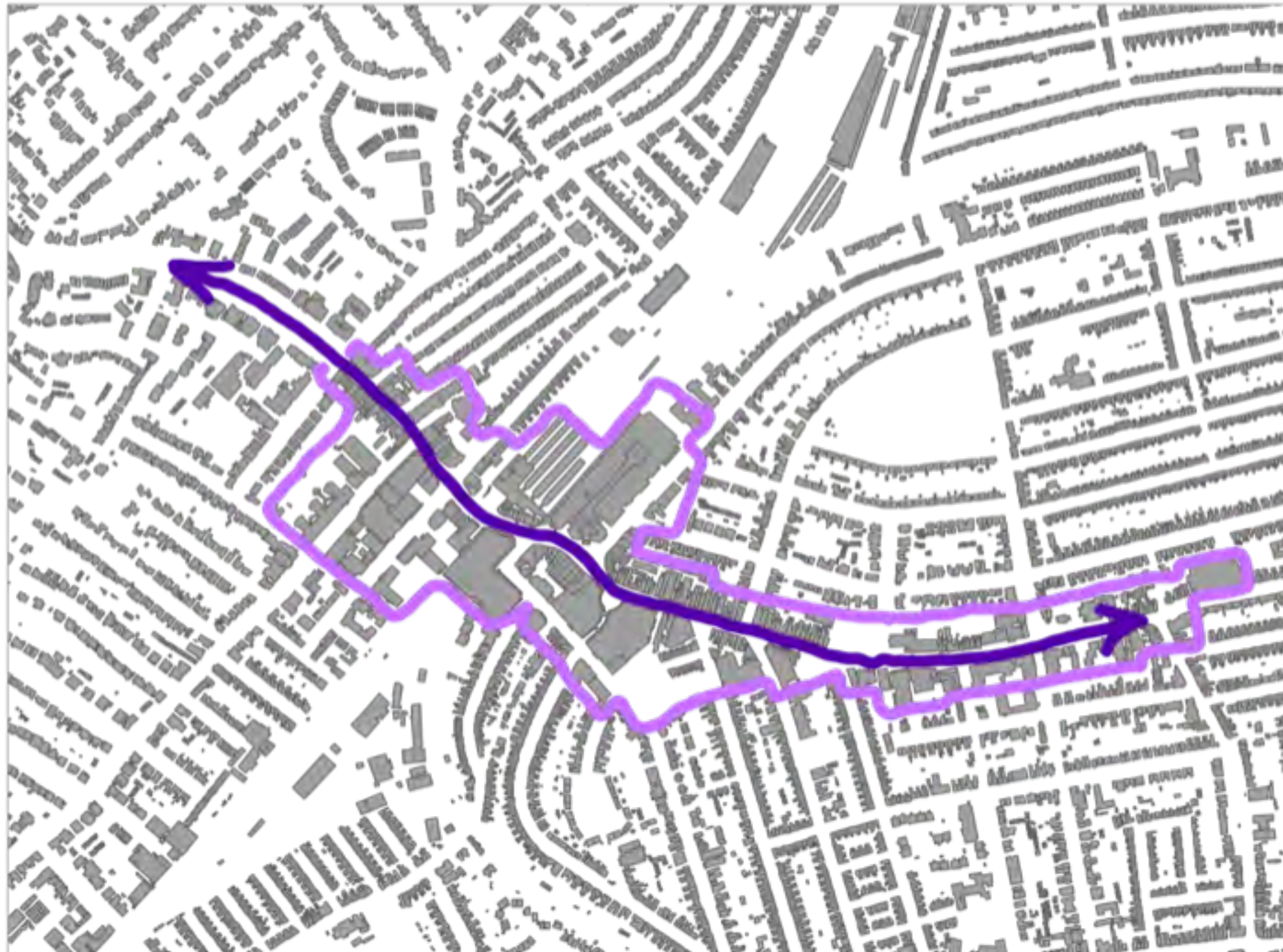
Do we love Wimbledon? Should we 'Save Wimbledon'?



Masterplan Area



Strategy for growth



Wimbledon 2040



Wimbledon DNA - design ethos

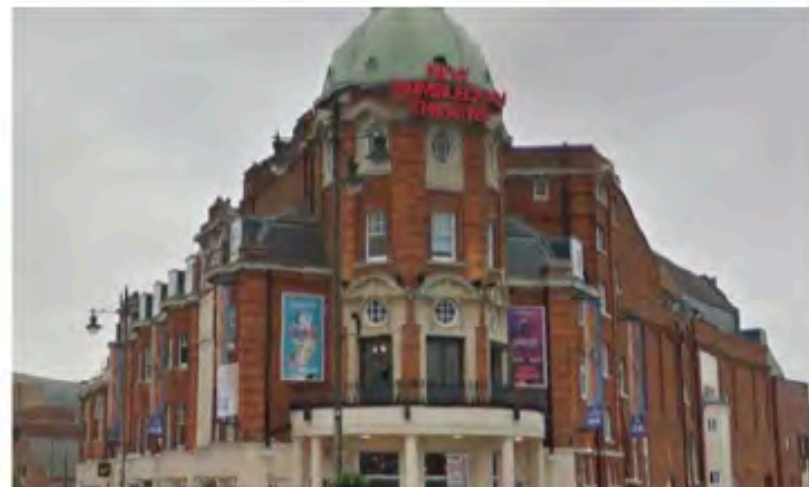
DESIGN QUALITY

WIMBLEDON'S DNA: TYPOLOGY AND MATERIALS

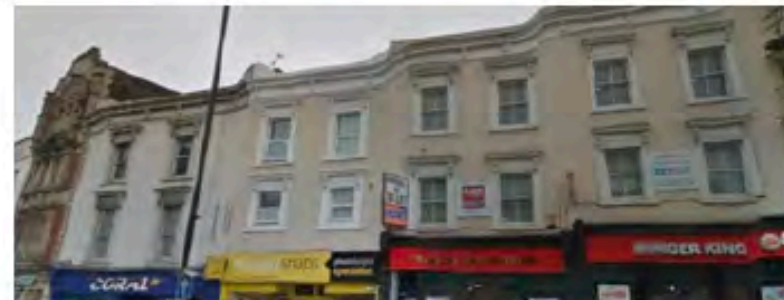
Group 1: Portland Stone



Group 2: Red brick / terracotta



Group 3: London stock brick



DESIGN QUALITY

WIMBLEDON'S DNA IN A NEW WAY

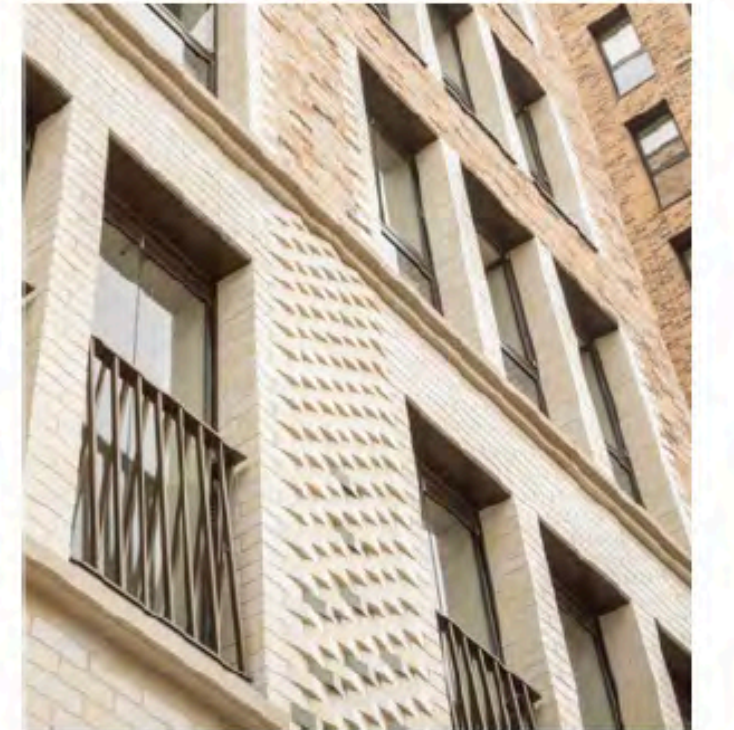
Group 1



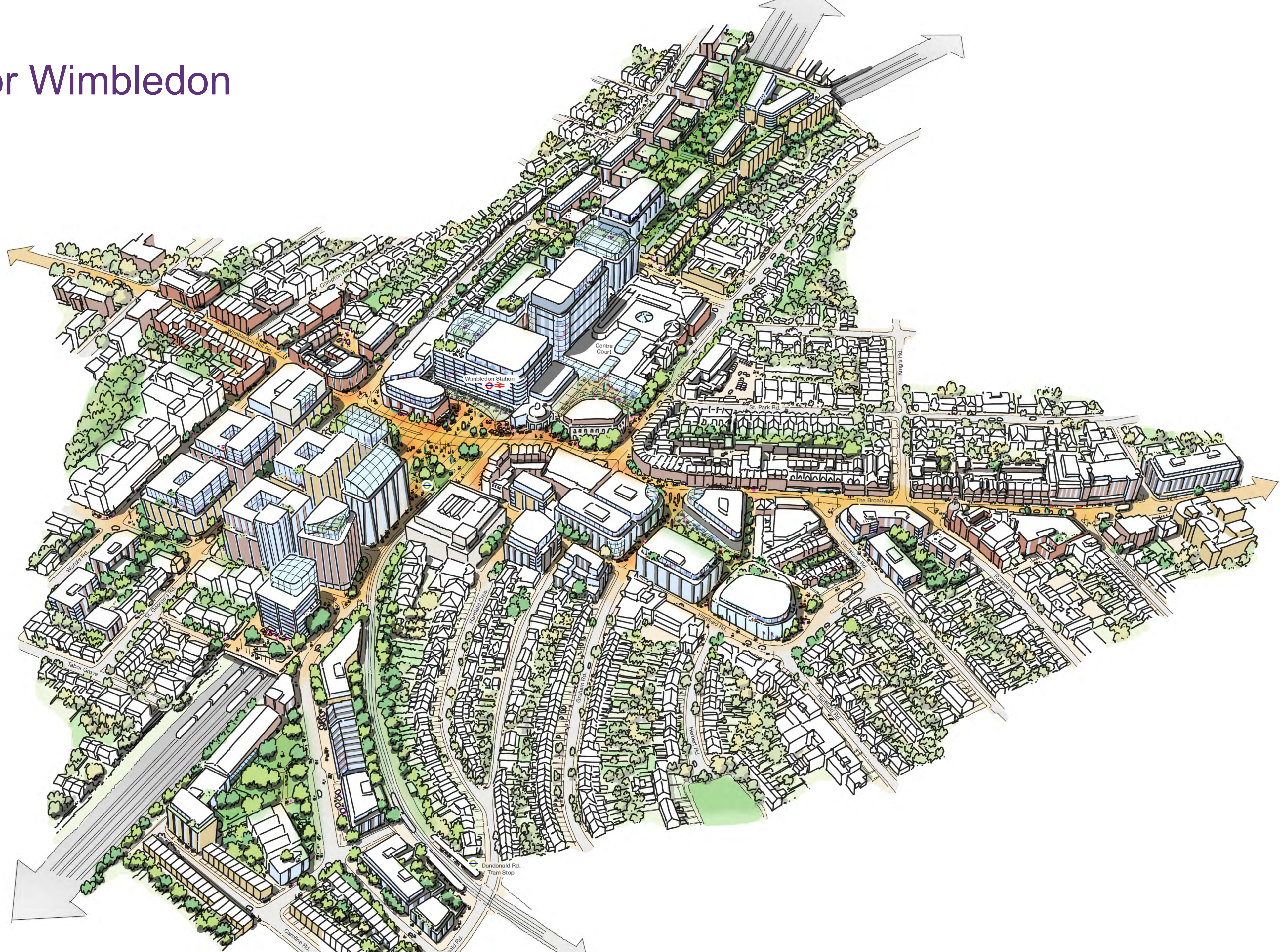
Group 2



Group 3



A vision for Wimbledon



**BE PART
OF THE
CO-DESIGN
PROCESS
FOR
WIMBLEDON
TOWN
CENTRE.**



DESIGN YOUR STREET

**ST MARK'S
PLACE
WIMBLEDON
THEATRE**

CO-DESIGN
workshops
for new
Wimbledon
public spaces

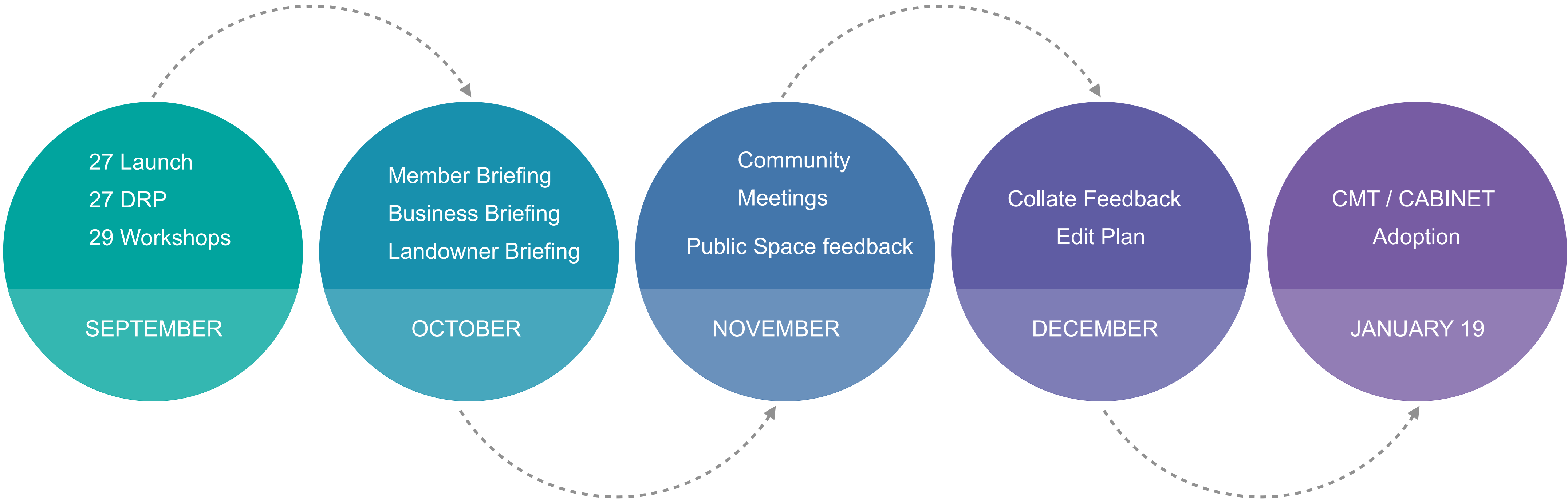
**IT'S TIME
TO PLAY
WIMBLEDON**



merton.gov.uk/futurewimbledon

ENGAGEMENT

MASTERPLAN AND PUBLIC SPACE DESIGNS



FW:

Future
Wimbledon

merton.gov.uk/futurewimbledon

